

ELK DRAWS

APPLICATION AND LICENCE LIMITS FOR ELK HUNTERS

Residents – may apply in only one of the following elk draws: Antlered Elk Special Licence, Antlerless Elk Special Licence, Either Sex Elk Special Licence, or WMU 300 Elk Special Licence. In addition, hunters may apply in the WMU 212 Antlerless Elk Special Licence Draw.

Non-residents (Canadian) – may apply for only the Antlered Elk Special Licence and must apply with a resident (maximum of 1 non-resident per resident).

Hunters may not possess more than 1 elk licence, with the exception of the WMU 212 Antlerless Elk Archery Licence and the WMU 212 Antlerless Elk Special Licence.

DRAW CODE 18

Antlered Elk Special Licence Draw

Residents and Non-residents (Canadian)

Prices (GST not included): Resident \$60.00 Non-resident \$250.00

6-POINT ELK An Antlered Elk Special Licence authorizes the holder to hunt a 6-point or larger antlered elk in 1 of the following WMUs during its listed season. See page 42 for definition of “6-point elk.”

Resident hunters successful in drawing an Antlered Elk Special Licence may designate a resident youth or senior partner to hunt with them and share the special licence tag. (See page 11 for details)

| Season | Select 1 of these WMUs |
|--|--|
| September 17 – November 30 | 404, 406, 408 |
| November 1 – November 30 | 509 |
| September 17 – November 30 Archery: August 25 – September 16 | 412, 414, 416, 417, 418, 420, 422, 426, 428, 430, 432, 434 |

ANTLERED ELK An Antlered Elk Special Licence authorizes the holder to hunt an antlered elk in 1 of the following WMUs or groups of WMUs (in parentheses) during its listed season. If applying for a WMU group, use the first WMU listed to identify the group. See page 42 for definition of “antlered.”

| Season | Select 1 (or the first) of these WMUs |
|---|---|
| November 1 – November 30 | 110, (132, 136, 138), (162, 163, 164, 166), (151, 152), (156, 158, 160), (200, 202, 203, 232, 234), (252, 254, 258, 260), (236, 238, 256), (206, 222, 226, 244, 246), (208, 210, 220), (204, 228, 230), (240, 242), 250 |
| December 1 – December 31 (Monday to Saturday only) | 116, 118, 119 |
| January 1, 2025 – January 31, 2025 (Monday to Saturday only) | |
| November 1 – November 23 Archery: October 17 – October 31 | 936 ² |

An Antlered Elk Special Licence authorizes the holder to hunt an antlered elk in 1 of the following WMUs or groups of WMUs (in parentheses) during 1 of its listed seasons.

| WMU | Season |
|----------|----------------------------|
| 102 | September 1 – September 23 |
| | September 24 – October 8 |
| | October 9 – October 23 |
| 104, 108 | September 1 - September 30 |
| | October 1 – October 24 |
| | October 25 – November 16 |
| | November 17 – December 20 |

Antlered Elk Special Licence Draws continued on next page

| WMU | Season |
|--|---------------------------------------|
| (116, 118, 119, 624 ¹) (WMU 624 – Monday to Friday) | November 4 – November 9 |
| | November 11 – November 16 |
| | November 18 – November 23 |
| | November 25 – November 30 |
| (124, 128, 142, 144, 148, 150) | September 1 – September 30 |
| | October 1 – October 24 |
| | October 25 – November 16 |
| | November 17 – December 20 |
| | January 1 – February 8, 2025 |
| 732 – CFB Suffield | January 11 – 13, 2025 (Sat, Sun, Mon) |
| | January 19 – 21, 2025 (Sun, Mon, Tue) |
| | January 27 – 29, 2025 (Mon, Tue, Wed) |

¹ Prior to hunting in Cypress Hills Provincial Park all hunters must obtain a firearm discharge permit and view an orientation session. Please visit <https://www.albertaparks.ca/albertaparksca/visit-our-parks/activities/hunting/firearms-discharge-permits/> for more information.

² According to the Provincial Parks (General) Regulation, a hunter is required to have a firearm discharge permit to hunt within a Provincial Park and Provincial Recreation Area. This regulation applies to all of the Provincial Parks and the majority of the Provincial Recreation Areas in Alberta where hunting is allowed. Please note WMU 936: Cooking Lake-Blackfoot Provincial Recreation Area and WMU 624: Cypress Hill Provincial Park do require orientations, please visit <https://www.albertaparks.ca/albertaparksca/visit-our-parks/activities/hunting/firearms-discharge-permits/> for more information.

DRAW CODE 19

Residents Only

Antlerless Elk Special Licence Draw

Price (GST not included): \$45.00

An Antlerless Elk Special Licence authorizes the holder to hunt an antlerless elk in 1 of the following WMUs or groups of WMUs (in parentheses) during its listed season. If applying for a WMU group, use the first WMU listed to identify the group. See page 42 for definition of “antlerless.”

Resident hunters successful in drawing an Antlerless Elk Special Licence may designate a resident youth or senior partner to hunt with them and share the special licence tag. (See page 11 for details)

| Season | Select 1 (or the first) of these WMUs |
|---|---|
| December 1 – December 31 (Monday to Saturday only) | (116, 118, 119) |
| January 1 – January 31, 2025 (Monday to Saturday only) | |
| September 17 – November 30 | 330, 352, 400, 402, 404, 406, 408, 438 ¹ , 439, 441 ² , 444 ³ |
| September 17 – December 20 | 340, 342, 344 ⁴ |
| November 1 – December 20 | 224, 334, 336, 503 |
| November 1 – November 23 Archery: October 17 – October 31 | 936 ⁵ |
| November 1 – January 31, 2025 | 110, (132, 136, 138) (162, 163, 164, 166), (151, 152), (156, 158, 160), (200, 202, 203, 232, 234), (252, 254, 258, 260), (236, 238, 256), (206, 222, 226, 244, 246), (208, 210, 220), (204, 228, 230), (240, 242) |

¹ This season applies only to that portion of WMU 438 that lies northwest of Highway 16 and southwest of Highway 40. Refer to the applicable map on page 25.

² This season applies only to that portion of WMU 441 that lies east of the Smoky River and southwest of the Muskeg River. Refer to the applicable map on page 25.

³ This season applies only to that portion of WMU 444 that lies west of the Smoky River and north of Beaverdam Road. Refer to the applicable map on page 25.

- ⁴ This season applies only to that portion of WMU 344 south of Wildhay River and Polecat Haul Road and west of Willow Creek Haul Road. Refer to the applicable map on page 25.
- ⁵ According to the Provincial Parks (General) Regulation, a hunter is required to have a firearm discharge permit to hunt within a Provincial Park and Provincial Recreation Area. This regulation applies to all of the Provincial Parks and the majority of the Provincial Recreation Areas in Alberta where hunting is allowed. Please note WMU 936: Cooking Lake-Blackfoot Provincial Recreation Area and WMU 624: Cypress Hill Provincial Park do require orientations, please visit <https://www.albertaparks.ca/albertaparksca/visit-our-parks/activities/hunting/firearms-discharge-permits/> for more information.

| WMU | Season |
|--|---------------------------------|
| 102 | September 1 – September 23 |
| | September 24 – October 8 |
| | October 9 – October 23 |
| 104, 108 | September 1 - September 30 |
| | October 1 – October 24 |
| | October 25 – November 16 |
| | November 17 – December 20 |
| (116, 118, 119, 624 ¹) (WMU 624 – Monday to Friday) | November 4 – November 9 |
| | November 11 – November 16 |
| | November 18 – November 23 |
| | November 25– November 30 |
| (124, 128, 142, 144, 148, 150) | September 1 – September 30 |
| | October 1 – October 24 |
| | October 25 – November 16 |
| | November 17 – December 20 |
| | January 1 – February 8, 2025 |
| (214 & 314), 312 | October 25 – November 20 |
| | November 21 – December 20 |
| | January 1 – January 31, 2025 |
| (216 & 320) (221 & 322) | November 1 – November 25 |
| | November 26 – December 20 |
| | January 1 – January 31, 2025 |
| 300 – Area A ² (Previously Draw Code 21) | September 4 – October 24 |
| | October 25 – December 24 |
| | December 25 – February 21, 2025 |
| 300 – Area B ² (Previously Draw Code 21) | September 4 – October 24 |
| | October 25 – December 24 |
| | December 25 – February 21, 2025 |
| 302-310 | October 25 – December 20 |
| | December 21 – January 31, 2025 |
| 318, 324, 332 | November 1 – November 25 |
| | November 26 – December 20 |
| 250, 337, 338 ³ , 348, 500-502, 504-509, 510, 511, 514 | November 1 – December 20 |
| | December 21 – January 31, 2025 |
| 346, 357-360, 520-523, 526, 527, 537, 544 | September 17 – October 31 |
| | November 1 – December 20 |
| | December 21 – January 31, 2025 |

Antlerless Elk Special Licence Draws continued on next page

| WMU | Season |
|---------|---------------------------|
| 353-356 | September 17 – October 31 |
| | November 1 – December 20 |

¹ Prior to hunting in Cypress Hills Provincial Park all hunters must obtain a firearm discharge permit and view an orientation session. Please visit <https://www.albertaparks.ca/albertaparksca/visit-our-parks/activities/hunting/firearms-discharge-permits/> for more information.

² See map on page 24 for information on WMU 300 Area A and B

³ The portion of WMU 338 that lies south of Highway 16 and north of the power line in Township 52. Refer to the applicable map on page 25.

| WMU | Season |
|--------------------|---------------------------------------|
| 732 – CFB Suffield | January 11 – 13, 2025 (Sat, Sun, Mon) |
| | January 19 – 21, 2025 (Sun, Mon, Tue) |
| | January 27 – 29, 2025 (Mon, Tue, Wed) |

IMPORTANT: See page 21 for application and licence limitations for elk hunters.

2024 CFB Suffield Elk Hunt Information

CFB Suffield's access policy restricts access to all persons under the age of 18.

CFB Suffield is used for general military training including live firing of various types of artillery, mortars, rockets, bombs and small arms. Unlike other training areas in Canada, these munitions may have been fired anywhere within CFB Suffield and may continue to pose a danger to those who enter. Likewise, CFB Suffield is much larger and much more challenging to navigate within than any other training area in Canada. For these reasons, hunters are required to follow special range-specific regulations for their own safety. **CFB Suffield reserves the right to cancel scheduled seasons without notice.**

Vehicle Access and Search

CFB Suffield roads and trails are very rough and not suited to typical highway passenger vehicles. Four-wheel-drive vehicles with good mud and snow tires are highly recommended. A valid driver's licence, vehicle registration and proof of valid insurance are required to access CFB Suffield. In addition, all hunters and helpers must provide some basic information when filling out various forms. More information about the forms can be found on the My Wild Alberta website (mywildalberta.ca). All forms required will be provided at the morning check in. All persons and vehicles entering and leaving CFB Suffield are subject to search.

Check-in/Check-out Procedures

1. All hunters must report daily for a Safety Briefing. Anyone late for the safety brief for that day will not be allowed to hunt that day.
2. Hunters will be restricted to specific hunting areas at all times while hunting at CFB Suffield. These areas will be monitored by military personnel and patrolled by Alberta Fish and Wildlife Officers. Failure to stay within the assigned area will result in loss of access privileges.
3. Hunters must check out at the Hunter Check Station (HCS) prior to leaving CFB Suffield at the end of each day. Failure to check out will result in loss of access privileges.

Military Requirements

1. Military use of CFB Suffield is paramount and subject to change on short notice.
2. All hunters must receive a safety briefing and sign a liability Waiver before being given access privileges.
3. All hunters and helpers must be 18 years of age or older. Those under 18 will not be allowed into the hunt area.
3. Off-highway vehicles (snowmobiles, all-terrain vehicles, etc), and UAV's are not permitted within CFB Suffield during this special hunt.
4. When outside vehicle in the hunt area, ALL persons must wear "high visibility" colored outerwear, i.e. vest and/ or hat to increase their visibility.
5. No overnight camping and no open fires are allowed.
6. There is a zero-tolerance policy for drug and alcohol use or possession in the range and training areas, including any drug that will impair an individual's judgement or cognitive ability. If a participant is found to be in possession of these items, they and their hunting party will be banned immediately upon entering the base.
7. Due to liability issues the military will not assist hunters with vehicles that are stuck or have mechanical problems. Hunters must make their own towing arrangements.

Additional information

Additional information can be found at the My Wild Alberta website: <https://mywildalberta.ca/hunting/hunting-draws/cfb-suffield-elk-hunt.aspx>. All hunters are encouraged to visit this link prior to arrival at CFB Suffield.

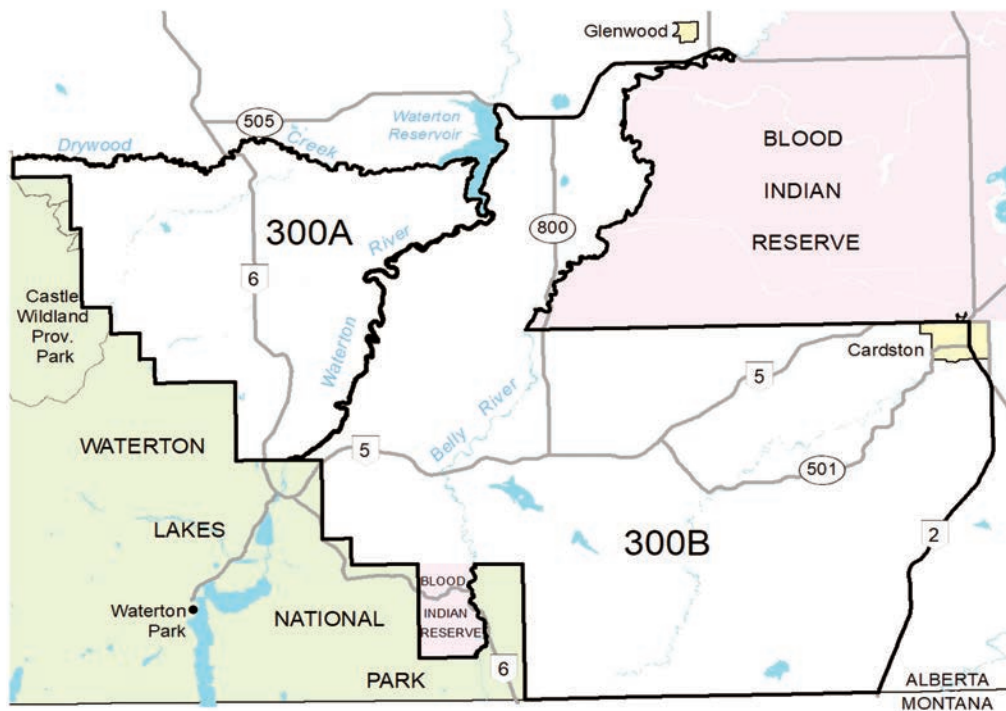
DRAW CODE 21**WMU 300 Elk Special Licence Draw****Residents Only****Price (GST not included): \$60.00**

A WMU 300 Elk Special Licence authorizes a Resident to hunt a 3-point or larger elk in the specified area of WMU 300 (Area A or Area B) during the time period specified on the licence. See page 42 for definitions of “3-point” elk. You may apply for a 3-point as indicated by the seasons shown below.

Resident hunters successful in drawing a WMU 300 Elk Special Licence may designate a resident youth or senior partner to hunt with them and share the special licence tag. (See page 11 for details)

The Antlerless Elk Special Licence draw in WMU 300 has been moved to Antlerless Elk Special Licence (Draw Code 19) on page 22.

| ANTLERED ELK Select 1 of these Seasons | |
|---|---------------------------------------|
| Area A | Area B |
| 3-Point – Antlered | 3-Point – Antlered |
| September 4 – October 24 | September 4 – October 24 |
| October 25 – December 24 | October 25 – December 24 |
| December 25, 2024 – February 21, 2025 | December 25, 2024 – February 21, 2025 |

**DRAW CODE 40****WMU 212 Antlerless Elk Special Licence Draw****Residents Only****Price (GST not included): \$45.00**

A WMU 212 Antlerless Elk Special Licence authorizes the holder to hunt an antlerless elk in WMU 212 during one of the specified time periods. See Page 42 for definition of “antlerless”.

Hunters are required to carry written permission from the landowner allowing access while hunting under this licence.

Resident hunters successful in drawing a WMU 212 Antlerless Elk Special Licence may designate a resident youth or senior partner to hunt with them and share the special licence tag. (See page 11 for details)

| WMU | Season |
|--|------------------------------|
| 212 (Primitive Weapon - muzzle loader, shotgun, cross-bow, bow and arrow) | November 1 - November 30 |
| | December 1 - December 31 |
| | January 1 - January 31, 2025 |

Residents Only

Price (GST not included): \$45.00

An Either Sex Elk Special Licence authorizes the holder to hunt either an antlered or antlerless elk in the specified WMUs during the specified time period. See page 42 for definitions of “antlered” and “antlerless.”

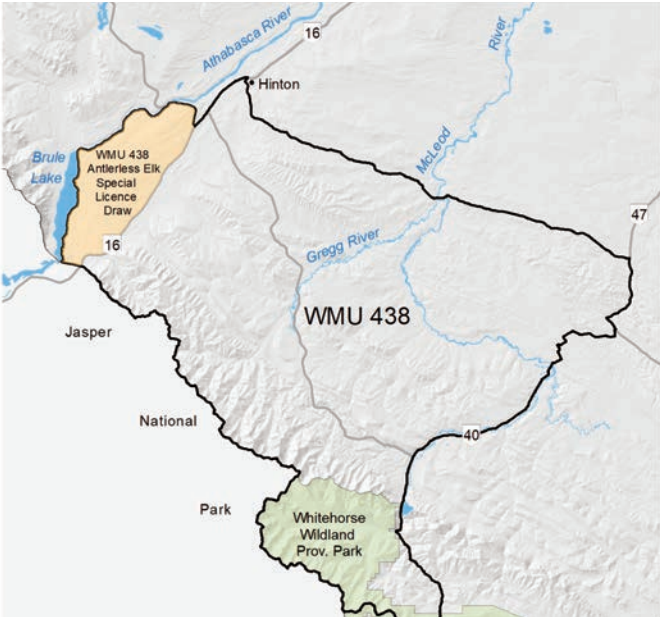
Resident hunters successful in drawing an Either Sex Elk Special Licence may designate a resident youth or senior partner to hunt with them and share the special licence tag. (See page 11 for details)

| WMU | Season |
|-------------------------|--|
| (728, 730) ¹ | November 28 – November 30 (muzzle loader, bow and arrow) |
| | December 2– December 14 (rifle or other legal weapon) |

¹ Hunters applying for WMUs (728-730) should read page 20 for rules and information about hunting CFB Wainwright. A licence for CFB Wainwright will be valid in both WMUs 728 and 730. Please use code 728 to identify this choice of area.

IMPORTANT: See page 21 for application and licence limitations for elk hunters.

Antlerless Elk Special Licence Draw WMU 438 Map



Antlerless Elk Special Licence Draw WMU 441 & 444 Map



Antlerless Elk Special Licence Draw WMU 338 Map



Antlerless Elk Special Licence Draw WMU 344 Map

